

HP Scitex Guide



for Supplies, Solutions and Services





HP is committed to your success. Your investment in an HP Scitex printing system is an investment towards success and growth.

To reach your business goals, you need your system to work with maximum productivity and cost effectiveness, all the time.

The HP Scitex portfolio spans and industrial printing applications, production volumes, ink technologies, and printing formats to provide your print production business with the solutions you need.

The HP Scitex complete printing solutions have built a reputation for performance, quality, dependability and value. Our deep understanding of market needs and on-going investment in solution development enables advanced printing systems, solutions and services, providing the highest customer experience and enabling you to provide one of the best application solutions to your print buyers.

This document provides you with the complete set of supplies, services and solutions that you may require for your printing system, to enable smooth printing operation and provide your print buyers with one of the best in class applications.

HP Scitex Printing Supplies

Designed for optimal printer performance and output quality, enabling best possible consistency, like all industrial inkjet printing systems, HP Scitex printing systems are a complex collection of electronics and electrical, mechanical and fluid-mechanical components. Each system is highly engineered, with each part calibrated to perform to a certain functional level in association with its other parts. Changing the calibration of one part of the system will impact the performance of other parts. HP Scitex inks have specific qualities and properties because they are developed and tested in conjunction with specific HP Scitex printing systems. While many third-party inks are designed for a particular printhead, HP Scitex inks are designed to work with the entire printing system; the printhead is just one factor among many, including the system's color reproduction software, screening, speed, drying process application, and more.

Because ink properties are critical to virtually every part of the printing system and affect print quality, productivity, and reliability, Original HP Scitex inks manufactured by HP are designed, tested, and developed with HP Scitex printing systems using approved media. Working together, they deliver optimal performance and value in Industrial printing solutions. While other inks may promise lower cost per liter, users must consider the total cost of production and how profit can be reduced by lower productivity, printer downtime and repairs, and the loss of the dependability of a solution developed, tested, and backed by HP.

HP Scitex End-to-end Solutions

HP Scitex provides end-to-end solutions to more efficiently drive pages to press. The HP SmartStream Workflow portfolio for Scitex provides complete workflow solutions by HP and partners to enhance PSPs' flexibility and grow their profits. HP Scitex Print Care maximizes uptime with fast, efficient assistance for effective and timely routine preventative maintenance.

HP Scitex Services

HP provides industry-leading, professional customer care and support through HP staff and authorized resellers, on-site and via advanced remote support tools. Our entire customer care structure is geared to one very fundamental goal: to ensure you enjoy maximum uptime and productivity from your HP printing solution. That's why we offer comprehensive, professional customer care to support your HP Scitex printers including a wide array of service programs and tools, complete training and support programs, warranty packages and upgrade options, enabling your success.



Table of contents

5 HP Scitex UV-Curable Printers and Presses

HP Scitex FB10000 Industrial Press
HP Scitex FB7600 Industrial Press
HP Scitex FB7500 Industrial Press
HP Scitex TJ8500/TJ8550 Industrial Presses
HP Scitex XP5500/XP5300 Industrial Printers
HP Scitex XP5100 Industrial Printer
HP Scitex XP2500/XP2300 Industrial Printers
HP Scitex XP2100 Industrial Printer
HP Scitex XP2700 Industrial Printer
HP Scitex XP2750 Industrial Printer
HP Scitex FB6100 Industrial Printer
HP Scitex FB6300 Industrial Printer

19 HP Scitex Solvent Printers and Presses

HP Scitex TJ8300/TJ8350 Industrial Presses
HP Scitex XL1200/XL1500 Industrial Printers

25 HP Scitex Water-based Printers

HP Scitex FB6700 Industrial Printer

29 HP Scitex Solutions

HP SmartStream Workflow Portfolio
HP Scitex Print Care

35 HP Scitex Services

HP Scitex Services
HP Scitex Care Center Country Support Numbers



HP Scitex UV-Curable Printers and Presses



HP Scitex F10000 Industrial Press



* Tested on 3M self-adhesive vinyl.

**Printed in POP100 gloss mode on CalPaper, validated with the Ugra/Fogra media wedge V3 and IDEAlliance Digital Control Strip 2009. Color verified with GMG ProofControl. Tested March, 2013

SUPPLIES

HP HDR240 Scitex Ink

CP777A	HP HDR240 10-liter Cyan Scitex Ink
CP778A	HP HDR240 10-liter Magenta Scitex Ink
CP779A	HP HDR240 10-liter Yellow Scitex Ink
CP780A	HP HDR240 10-liter Black Scitex Ink
CP781A	HP HDR240 10-liter Light Cyan Scitex Ink
CP782A	HP HDR240 10-liter Light Magenta

Maintenance

CP803A	HP MF30 10-liter with Acu Scitex Cleaner
---------------	--

The HDR240 inks are 6 colors of pigmented UVC ink that provides excellent performance on both rigid and flexible media.

Ink coverage: Up to 149 sqm/liter (at POP80 mode, using econo-split).

Outdoor durability: Up to 2 years outdoor weather resistance according to ASTM D2565-99*

Shelf life: 12 months from production date.

Certifications: HDR240 ink system is GREENGUARD CertifiedSM.
The HDR240 inks comply with ISO standards including proofing standards according to ISO12647-7**.

SERVICES

Service

HA151AC	HP Full Coverage Maintenance Support Contract
HA965AC	HP Shared Maintenance Support Contract
HK951AC	HP Printhead Allowance Service (Optional Extended Coverage)
HK930A1	HP On-site Ramp Up Services
CX190-01730 / CS034A	HP Scitex FB10000 Printer Maintenance Kit
CS030A	HP Scitex FB10000 Standard Uptime Kit

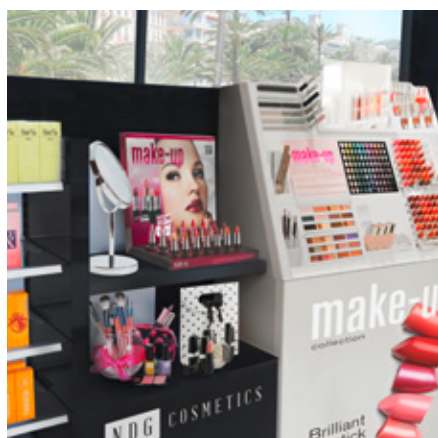
Options

CM111A	HP Scitex FB10000 Multi-sheet Loader Kit
CM110A	HP Scitex FB10000 ¾ Automated Single-sheet Loader

“Quite simply, the HP Scitex FB10000 Industrial Press reinforces our ability to serve the packaging and POS market. Our current business is split 60 per cent packaging and 40 per cent POS, and this investment will improve our service levels to a standard that competes with traditional analog technologies.”

– Nick Kirby, managing director, Swanline Print Ltd.

HP Scitex FB7600 Industrial Press



SUPPLIES

HP FB225 Scitex Ink

CP756A	HP FB225 2-pack 5-liter Cyan Scitex Ink
CP757A	HP FB225 2-pack 5-liter Magenta Scitex Ink
CP758A	HP FB225 2-pack 5-liter Yellow Scitex Ink
CP759A	HP FB225 2-pack 5-liter Black Scitex Ink
CP800A	HP FB225 2-pack 5-liter Light Cyan Scitex Ink
CP799A	HP FB225 2-pack 5-liter Light Magenta Scitex Ink
CP794A	HP FB225 2-pack 5-liter Orange Scitex Ink
CP798A	HP FB225 2-pack 5-liter Light Black Scitex Ink
CP530A	HP FB225 2-pack 5-liter White Scitex Ink

Maintenance

CN750A	HP MF10 25-liter Scitex Cleaner
---------------	---------------------------------

The FB225 inks are 8 colors of pigmented UVC ink that provide excellent performance on both rigid and flexible media.

Ink coverage: 124 sqm/liter (at POP40 mode).

Outdoor durability: Up to 24 months.

Shelf life: 12 months from production date.

Certifications: FB225 color and white ink system is GREENGUARD CertifiedSM.
 FB225 color inksystem meets AgBB criteria.
 The FB225 Color inks comply with ISO standards including proofing standards according to ISO12647-7.

SERVICES

Service

HA151AC	HP Scitex FB7600 Full Coverage Service
HK707AC	HP Scitex FB7600 Parts and Remote Service
CS027A	HP Scitex FB7600 Basic Uptime Kit
CS028A	HP Scitex FB7600 Extended Uptime Kit

Upgrades

CP406A	HP Scitex FB7600 Upgrade Pack
CP390A	HP Scitex FB7500/FB7600 Multi-sheet Loader Kit
CP386A	HP Scitex FB7500/FB7600 White Ink Kit
CP407A	HP Scitex FB7600 Vacuum Caps Upgrade Pack
CP408A	HP Scitex FB7x00 Additional Ink Channel Upgrade

HP Scitex FB7500 Industrial Press



SUPPLIES

HP FB221 Scitex Ink

CP511A	HP FB221 2-pack 5-liter Cyan Scitex Ink
CP512A	HP FB221 2-pack 5-liter Magenta Scitex Ink
CP513A	HP FB221 2-pack 5-liter Yellow Scitex Ink
CP514A	HP FB221 2-pack 5-liter Black Scitex Ink
CP515A	HP FB221 2-pack 5-liter Light Cyan Scitex Ink
CP516A	HP FB221 2-pack 5-liter Light Magenta Scitex Ink

Maintenance

CN750A	HP MF10 25-liter Scitex Cleaner
---------------	---------------------------------

The FB221 inks are 6 colors of pigmented UVC ink that provide good performance on both rigid and flexible media.

Ink coverage: 124 sqm/liter (at POP17/34 modes).

Outdoor durability: Up to 24 months.

Shelf life: 12 months from production date.

SERVICES

Service

HA151AC	HP Scitex FB7500 Full Coverage Service
HK707AC	HP Scitex FB7500 Parts and Remote Service
CC903-63217	HP Scitex FB7500 Basic Uptime Kit
CC903-63230	HP Scitex FB7500 Extended Uptime kit

Upgrades

CP390A	HP Scitex FB7500/FB7600 Multi-sheet Loader Kit
CP386A	HP Scitex FB7500/FB7600 White Ink Kit ¹
CP375A	FB7500 Industrial Press Upgrade Kit

¹Use of white ink with the HP Scitex FB7500 Industrial Press requires installation of the HP Scitex FB7500 Industrial Press Upgrade Kit and the HP Scitex FB7500/FB7600 White Ink Kit..

”There have been two business-changing machines in the past five years. First the Turbojet and now the HP Scitex FB7500 Printer. We can go after markets that were once nearly impossible. We’re now getting into screen quantity runs.”

– Troy McGinnis, General Manager, Gigantic Color

HP Scitex TJ8600 Industrial Press



SUPPLIES

HP TJ210 Scitex Ink

CH830A	HP TJ210 2-pack 5-liter Cyan Scitex Ink
CH831A	HP TJ210 2-pack 5-liter Magenta Scitex Ink
CH832A	HP TJ210 2-pack 5-liter Yellow Scitex Ink
CH833A	HP TJ210 2-pack 5-liter Black Scitex Ink
CH834A	HP TJ210 2-pack 5-liter Light Cyan Scitex Ink
CH835A	HP TJ210 2-pack 5-liter Light Magenta Scitex Ink

Maintenance

CN750A	HP MF10 25-liter Scitex Cleaner
---------------	---------------------------------

Consumables

CP399A	HP Scitex E1 Print Head Assembly
---------------	----------------------------------

The TJ210 inks are 6 colors of pigmented UVC ink, designed for flexible media and high printing speeds.

Ink coverage: 130 sqm/liter with matt and 160 sqm/liter with gloss, (billboard mode, billboard mode, 480 sqm/hr).

Outdoor durability: Up to 24 months.

Shelf life: 12 months from production date.

Certifications: TJ210 ink system is GREENGUARD CertifiedSM.

SERVICES

Service

HA151AC	HP Scitex TJ85XX Full Coverage Service
HK707AC	HP Scitex TJ85XX Parts and Remote Service
CS016A	HP Scitex TJ85X0 Basic Uptime Kit
CS025A	HP Scitex TJ8600 Delta Uptime Kit

SOLUTIONS

Accessories

CG712A	HP Scitex TJ8XXX Double sided Print Kit
---------------	---

Upgrades

CP403A	HP Scitex TJ8600 Industrial Press POP Mode Upgrade Kit
CP402A	HP Scitex TJ Remote Operating Station Upgrade

HP Scitex TJ8500/TJ8550 Industrial Presses



SUPPLIES

HP TJ210 Scitex Ink

CH830A	HP TJ210 2-pack 5-liter Cyan Scitex Ink
CH831A	HP TJ210 2-pack 5-liter Magenta Scitex Ink
CH832A	HP TJ210 2-pack 5-liter Yellow Scitex Ink
CH833A	HP TJ210 2-pack 5-liter Black Scitex Ink
CH834A	HP TJ210 2-pack 5-liter Light Cyan Scitex Ink
CH835A	HP TJ210 2-pack 5-liter Light Magenta Scitex Ink

HP TJ200 Scitex Ink

CN782A	HP TJ200 2-pack 5-liter Cyan Scitex Ink
CN783A	HP TJ200 2-pack 5-liter Magenta Scitex Ink
CN784A	HP TJ200 2-pack 5-liter Yellow Scitex Ink
CN785A	HP TJ200 2-pack 5-liter Black Scitex Ink
CN786A	HP TJ200 2-pack 5-liter Light Cyan Scitex Ink
CN787A	HP TJ200 2-pack 5-liter Light Magenta Scitex Ink

Maintenance

CN750A	HP MF10 25-liter Scitex Cleaner
---------------	---------------------------------

Consumable

CP399A	HP Scitex E1 Print Head Assembly
---------------	----------------------------------

The TJ200 and TJ210 Inks are a 6 color pigmented UVC ink, designed for flexible media and high printing speeds.

Ink coverage: TJ200: 130 sqm/liter (billboard mode, 480 sqm/hr); TJ210: 130sqm/liter with matt and 160 sqm/liter with gloss (billboard mode, 480 sqm/hr).

Outdoors durability: Up to 24 months.

Shelf life: 12 months from production date.

SERVICES

Service

HA151AC	HP Scitex TJ85XX Full Coverage Service
HK707AC	HP Scitex TJ85XX Parts and Remote Service
CC903-63220	HP Scitex TJ85X0 Basic Uptime Kit

SOLUTIONS

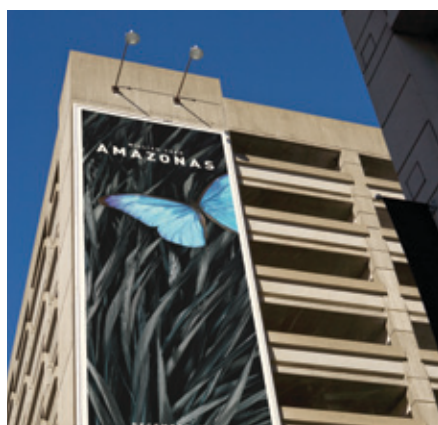
Accessories

CG712A	HP Scitex TJ8XXX Double sided Print Kit
---------------	---

Upgrades

CM063A	HP Scitex TJ8500 to TJ8600 Printer Upgrade Kit
CM065A	HP Scitex TJ8550 to TJ8600 Printer Upgrade Kit

HP Scitex XP5500/XP5300 Industrial Printers



SUPPLIES

HP XP231 Specialty Billboard Scitex Ink

CN869A	HP XP231 2-pack 5-liter Specialty Billboard Yellow Scitex Ink
CN870A	HP XP231 2-pack 5-liter Specialty Billboard Magenta Scitex Ink
CN871A	HP XP231 2-pack 5-liter Specialty Billboard Cyan Scitex Ink
CN872A	HP XP231 2-pack 5-liter Specialty Billboard Black Scitex Ink

HP XP222 Scitex Ink (in standard mode)

CH663A	HP XP222 2-pack 5-liter Magenta Scitex Ink
CH664A	HP XP222 2-pack 5-liter Yellow Scitex Ink
CH655A	HP XP222 2-pack 5-liter Cyan Scitex Ink
CH665A	HP XP222 2-pack 5-liter Black Scitex Ink

Maintenance

CP527A	HP MF26 4x1L Scitex Cleaner
---------------	-----------------------------

The HP Scitex XP5500 Industrial Printer can print with two types of ink, according to the printing modes:

1. The Specialty Billboard inks are used with Billboard mode. They offer high-speed printing with high ink coverage.
2. The XP222 ink (CMYK colors only) is used with Standard mode. It offers higher print quality but with lower throughput.

Ink coverage: XP231 Specialty Billboard: 207 sqm/liter (at Billboard mode) XP222: 140 sqm/liter (at "high press" mode)

Outdoor durability: Up to 24 months.

Shelf life: 12 months from production date.

SERVICES

Service

HA151AC	HP Scitex XP5500 Full Coverage Service
HK707AC	HP Scitex XP5500 Parts and Remote Service
CS022A	HP Scitex XP5500 Basic Uptime Kit

SOLUTIONS

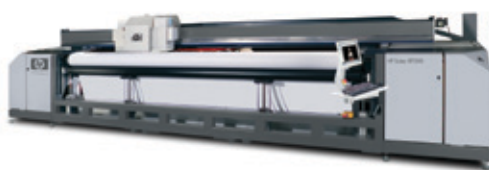
Accessories

CP114A	HP Scitex XP5x00 Adapter for 6-in Cores 6 units Upgrade
---------------	---

Upgrades

CP394A	HP Scitex XP5500 Double-sided Print Upgrade
CP385A	HP Scitex XP5300 Printer Upgrade Pack

HP Scitex XP5100 Industrial Printer



SUPPLIES

HP XP222 Scitex Ink

CH664A	HP XP222 2-pack 5-liter Yellow Scitex Ink
CH668A	HP XP222 5-liter Light Yellow Scitex Ink
CH663A	HP XP222 2-pack 5-liter Magenta Scitex Ink
CH667A	HP XP222 5-liter Light Magenta Scitex Ink
CH655A	HP XP222 2-pack 5-liter Cyan Scitex Ink
CH666A	HP XP222 5-liter Light Cyan Scitex Ink
CH665A	HP XP222 2-pack 5-liter Black Scitex Ink
CH662A	HP XP222 5-liter Light Black Scitex Ink

Maintenance

CP527A	HP MF26 4x1L Scitex Cleaner
---------------	-----------------------------

The XP222 inks are 8 colors of UVC pigmented ink optimized for flexible applications. These inks feature high image quality with high flexibility and low odor.

Ink coverage: 140 sqm/liter (at "high press" mode)

Outdoor durability: Up to 24 months.

Shelf life: 12 months from production date.

SERVICES

Service

HA151AC	HP Scitex XP5100 Full Coverage Service
HK707AC	HP Scitex XP5100 Parts and Remote Service
CS007A	HP Scitex XP5100 Basic Uptime Kit
CC903-63238	HP Scitex XP5100 Extended Uptime Kit

SOLUTIONS

Accessories

CP114A	HP Scitex XP5X00 Adaptor For 6-inch Cores Upgrade 6 units
---------------	---

HP Scitex XP2500/XP2300 Industrial Printers



SUPPLIES

HP XP231 Specialty Billboard Scitex Ink

CN869A	HP XP231 2-pack 5-liter Specialty Billboard Yellow Scitex Ink
CN870A	HP XP231 2-pack 5-liter Specialty Billboard Magenta Scitex Ink
CN871A	HP XP231 2-pack 5-liter Specialty Billboard Cyan Scitex Ink
CN872A	HP XP231 2-pack 5-liter Specialty Billboard Black Scitex Ink

HP XP222 Scitex Ink (in standard mode)

CH663A	HP XP222 2-pack 5-liter Magenta Scitex Ink
CH664A	HP XP222 2-pack 5-liter Yellow Scitex Ink
CH655A	HP XP222 2-pack 5-liter Cyan Scitex Ink
CH665A	XP222 2-pack 5-liter Black Scitex Ink

Maintenance

CP527A	HP MF26 4x1L Scitex Cleaner
---------------	-----------------------------

The HP Scitex XP2500 Industrial Printer can print with two types of ink, according to the printing modes:

1. The Specialty Billboard inks are used with Billboard mode. They offer high-speed printing with high ink coverage.
2. The XP222 ink (CMYK colors only) is used with Standard mode. It offers higher print quality but with lower throughput.

Ink coverage: XP231 Specialty Billboard: 207 sqm/liter (at Billboard mode)
XP222: 140 sqm/liter (at "high press" mode)

Outdoor durability: Up to 24 months.

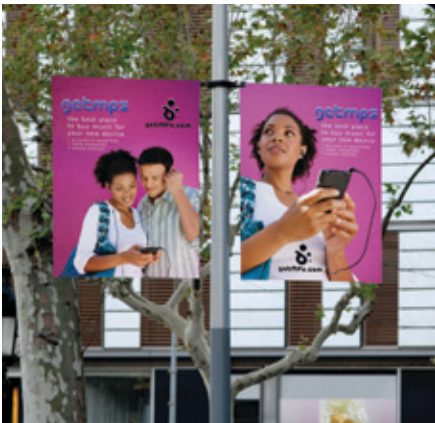
Shelf life: 12 months from production date.

SERVICES

Service

HA151AC	HP Scitex XP2500 Full Coverage Service
HK707AC	HP Scitex XP2500 Parts and Remote Service
CS020A	HP Scitex XP2500 Basic Uptime Kit

HP Scitex XP2100 Industrial Printer



SUPPLIES

HP XP222 Scitex Ink	
CH664A	HP XP222 2-pack 5-liter Yellow Scitex Ink
CH668A	HP XP222 5-liter Light Yellow Scitex Ink
CH663A	HP XP222 2-pack 5-liter Magenta Scitex Ink
CH667A	HP XP222 5-liter Light Magenta Scitex Ink
CH655A	HP XP222 2-pack 5-liter Cyan Scitex Ink
CH666A	HP XP222 5-liter Light Cyan Scitex Ink
CH665A	HP XP222 2-pack 5-liter Black Scitex Ink
CH662A	HP XP222 5-liter Light Black Scitex Ink
Maintenance	
CP527A	HP MF26 4x1L Scitex Cleaner

The XP222 inks are 8 colors of UVC pigmented ink optimized for flexible applications. These inks feature high image quality with high flexibility and low odor.

Ink coverage: 140 sqm/liter (at “high press” mode)

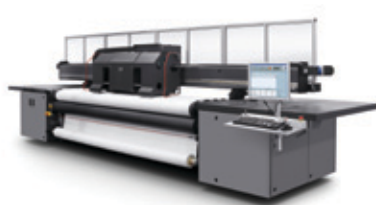
Outdoor durability: Up to 24 months.

Shelf life: 12 months from production date.

SERVICES

Service	
HA151AC	HP Scitex XP2100 Full Coverage Service
HK707AC	HP Scitex XP2100 Parts and Remote Service
CC903-63227	HP Scitex XP2100 Basic Uptime Kit

HP Scitex XP2750/XP2700 Industrial Printer



SUPPLIES

HP XP222 Scitex Ink

CH664A	HP XP222 2-pack 5-liter Yellow Scitex Ink
CH668A	HP XP222 5-liter Light Yellow Scitex Ink
CH663A	HP XP222 2-pack 5-liter Magenta Scitex Ink
CH667A	HP XP222 5-liter Light Magenta Scitex Ink
CH655A	HP XP222 2-pack 5-liter Cyan Scitex Ink
CH666A	HP XP222 5-liter Light Cyan Scitex Ink
CH665A	HP XP222 2-pack 5-liter Black Scitex Ink
CH662A	HP XP222 5-liter Light Black Scitex Ink

Maintenance

CP527A	HP MF26 4x1L Scitex Cleaner
---------------	-----------------------------

The XP222 ink (CMYK colors only) offers higher print quality with lower throughput.

Ink coverage: XP222: 136 sqm/liter (at “high press” mode)

Outdoor durability: Up to 24 months.

Shelf life: 12 months from production date.

SERVICES

Service

HA151AC	HP Scitex XP2700/2750 Full Coverage Service
HK707AC	HP Scitex XP2700/2750 Parts and Remote Service
CC903-63213	HP Scitex XP2700 Basic Uptime Kit

HP Scitex FB6300/FB6100 Industrial Printers



SUPPLIES

HP FB210 Specialty Flexible Scitex ink

CH872A	HP FB210 4-pack 1-liter Specialty Flexible Yellow Scitex ink
CH873A	HP FB210 4-pack 1-liter Specialty Flexible Light Yellow Scitex ink
CH874A	HP FB210 4-pack 1-liter Specialty Flexible Magenta Scitex ink
CH875A	HP FB210 4-pack 1-liter Specialty Flexible Light Magenta ink
CH876A	HP FB210 4-pack 1-liter Specialty Flexible cyan Scitex ink
CH877A	HP FB210 4-pack 1-liter Specialty Flexible Light cyan Scitex ink
CH878A	HP FB210 4-pack 1-liter Specialty Flexible Black Scitex ink
CH879A	HP FB210 4-pack 1-liter Specialty Flexible Light Black Scitex ink

HP FB210 Scitex ink

CN859A	HP FB210 4-pack 1-liter Yellow Scitex ink
CN860A	HP FB210 4-pack 1-liter Light Yellow Scitex ink
CN861A	HP FB210 4-pack 1-liter Magenta Scitex ink
CN862A	HP FB210 4-pack 1-liter Light Magenta Scitex ink
CN863A	HP FB210 4-pack 1-liter cyan Scitex ink
CN864A	HP FB210 4-pack 1-liter Light cyan Scitex ink
CN865A	HP FB210 4-pack 1-liter Black Scitex ink
CN866A	HP FB210 4-pack 1-liter Light Black Scitex ink
CN867A	HP FB210 4-pack 1-liter White Scitex ink

The FB210 ink is the standard ink for rigid applications. it produces vivid and glossy prints.

The FB210 Specialty Flexible ink is intended for flexible applications and improved post processing. The special primers are available for manual application on the relevant media and enable high quality and durable prints on the specified materials.

Ink coverage : 153 sqm/liter (at 4c33 mode).

Outdoor durability: Up to 24 months.

Shelf life: 12 months from production date (except white ink – 6 months).

Maintenance

CH880A	HP MF25 4-pack 1-liter Scitex cleaner
---------------	---------------------------------------



All Rice!

ALL KINDS OF RICE FOR ALL KINDS OF PEOPLE

This image was printed using:
3A Composites - SMART-X® 5mm
HP Scitex FB500/700 Industrial Printer
Print Mode: 6c Indoor Signage Plus
Print Speed: 12.8 sqm/h (138 sqft/h)
www.hp.com/go/ScitexFB500
www.hp.com/go/ScitexFB700



HP Scitex Solvent Printers and Presses

HP Scitex TJ8300/TJ8350



SUPPLIES

HP TJ100 Supreme Scitex Ink	
CN980A	HP TJ100 10-liter Supreme Cyan Scitex Ink
CN981A	HP TJ100 10-liter Supreme Magenta Scitex Ink
CN982A	HP TJ100 10-liter Supreme Yellow Scitex Ink
CN983A	HP TJ100 10-liter Supreme Black Scitex Ink
CN984A	HP TJ100 10-liter Supreme Light Cyan Scitex Ink
CN985A	HP TJ100 10-liter Supreme Light Magenta Scitex Ink
HP TJ100 Flash Scitex Ink	
CN986A	HP TJ100 10-liter Flash Cyan Scitex Ink
CN987A	HP TJ100 10-liter Flash Magenta Scitex Ink
CN988A	HP TJ100 10-liter Flash Yellow Scitex Ink
CN989A	HP TJ100 10-liter Flash Black Scitex Ink
CN990A	HP TJ100 10-liter Flash Light Cyan Scitex Ink
CN991A	HP TJ100 10-liter Flash Light Magenta Scitex Ink
The TJ100 Supreme ink is for those high-demanding jobs that need long durability.	
Ink coverage: TJ100 Supreme: 70 sqm/liter (at “billboard” mode, 480 sqm/hr)	
Outdoor durability: TJ100 Supreme: up to 24 months. TJ100 Flash: up to 6 months.	
Shelf life: 18 months from production date.	
Maintenance	
CN750A	HP MF10 25-liter Scitex Cleaner
Consumables	
CP399A	HP Scitex E1 Print Head Assembly



The HP Scitex TJ100 Supreme is certified by 3M® performance warranty and Avery® Integrated Component System (ICS) warranty (USA) and Supreme Cover (EU) when printed on the approved media from the corresponding manufacturer.

An approved MCS ink (with 5 year warranty) for these printers is also available from 3M Company.

SERVICES

Service

HA151AC	HP Scitex TJ83X0 Full Coverage Service
HK707AC	HP Scitex TJ83XX Parts and Remote Service
CS018A	HP Scitex TJ83X0 Basic Uptime Kit
CS024A	HP Scitex TJ83X0 Extended Uptime Kit

SOLUTIONS

Accessories

CG712A	HP Scitex TJ8XXX Double-sided Printing Kit
CM015A	HP Scitex TJ8300 to TJ8350 Upgrade with Driver Board

Upgrades

CM013A	HP Scitex TJ8350 Printer 100+ upgrade Kit
CM014A	HP Scitex TJ8350 Printer 0-100 upgrade Kit

“The HP Scitex TJ8300 Printer enables us to produce larger jobs in less time, thereby increasing customer confidence and loyalty.”

– Arthur Boisfontaine, Managing Partner, Crystal Clear Imaging

HP Scitex XL1200/XL1500



SUPPLIES

HP XL400 Supreme Scitex Ink

CN958A	HP XL400 2-pack 5-liter Supreme Cyan Scitex Ink
CN959A	HP XL400 2-pack 5-liter Supreme Magenta Scitex Ink
CN960A	HP XL400 2-pack 5-liter Supreme Yellow Scitex Ink
CN961A	HP XL400 2-pack 5-liter Supreme Black Scitex Ink

HP XL300 Supreme Scitex Ink

CN938A	HP XL300 2-pack 5-liter Supreme Cyan Scitex Ink
CN939A	HP XL300 2-pack 5-liter Supreme Magenta Scitex Ink
CN940A	HP XL300 2-pack 5-liter Supreme Yellow Scitex Ink
CN941A	HP XL300 2-pack 5-liter Supreme Black Scitex Ink
CN942A	HP XL300 2-pack 5-liter Supreme Light Cyan Scitex Ink
CN943A	HP XL300 2-pack 5-liter Supreme Light Magenta Scitex Ink
CN944A	HP XL300 2-pack 5-liter Supreme Light Yellow Scitex Ink
CN945A	HP XL300 2-pack 5-liter Supreme Light Black Scitex Ink

HP DS100 Specialty Textile Ink

CD399A	HP DS100 1-gallon Specialty Textile Cyan Scitex Ink
CN939A	HP DS100 1-gallon Specialty Textile Magenta Scitex Ink
CN940A	HP DS100 1-gallon Specialty Textile Yellow Scitex Ink
CD402A	HP DS100 1-gallon Specialty Textile Black Scitex Ink
CD403A	HP DS100 1-gallon Specialty Textile Light Cyan Scitex Ink
CD404A	HP DS100 1-gallon Specialty Textile Light Magenta Scitex Ink
CD405A	HP DS100 1-gallon Specialty Textile Light Yellow Scitex Ink
CD406A	HP DS100 1-gallon Specialty Textile Light Black Scitex Ink



There are currently various series of inks for the HP Scitex XL printers:

- XL300 Supreme inks are 8 colors of pigmented solvent ink, formulated especially for the newer and faster versions of the XL1x00 printers. These inks offer high-speed printing as well as the long durability of the Supreme series.
- XL400 Supreme inks are 4 colors of pigmented solvent ink formulated especially for lower maintenance and better image quality, especially in solid areas. Although not as fast drying as the XL300 Supreme inks, the XL400 inks provide better throughput, since the maintenance (purging) time is reduced significantly (from once every 60-90 seconds to about once every 500 seconds). The ink's durability is, of course, like all other Supreme inks. For 8 colors use XL300 Supreme light colors with XL400 Supreme 4 colors.
- DS100 Specialty Textile inks are 4 colors of dye sublimation solvent ink designed especially for textile printing. These inks can print on a variety of Polyester textile media, through a dual-process printing (printing on a transfer paper on the printer followed by heat transfer to the textile media on a dedicated transfer machine). This ink is used on the XL1500 DS printer.

Ink coverage: XL300 Supreme: 75 sqm/liter (at "billboard" mode, 4 colors)

Outdoor durability: XL300/400 Supreme: up to 24 months.
DS100 Specialty Textile: up to 3 months.

Shelf life: XL300/400 Supreme: 18 months from production date.
DS100 Specialty Textile: 12 months from production date.

Maintenance

CN750A	HP MF10 25-liter Scitex Cleaner
---------------	---------------------------------

Consumables

CP219A	HP Scitex Xaar P128-200 4.25KHz Assy
---------------	--------------------------------------

The HP XL300 Supreme Scitex Ink is certified by 3M® performance warranty and by Avery® Integrated Component System (ICS) warranty (USA) and Supreme Cover (EU) when printed on the approved media from the corresponding manufacturer.

An approved MCS ink (with 5 year warranty) for these printers is also available from 3M Company.

SERVICES

Service

HA151AC	HP Scitex XL1200/1500 Full Coverage Service
HK707AC	HP Scitex XL1200/1500 Parts and Remote Service
CC903-63226	HP Scitex XL1200/1500 3M Basic Uptime Kit
CC903-63225	HP Scitex XL1200/1500 5M Basic Uptime Kit



HP Scitex Water-based Printers

HP Scitex FB6700 Press



SUPPLIES

HP WB300 Supreme Scitex Ink

CN741A	HP WB300 4-pack 3.8-kg Supreme Cyan Scitex Ink
CN742A	HP WB300 4-pack 3.8-kg Supreme Magenta Scitex Ink
CN743A	HP WB300 4-pack 3.8-kg Supreme Yellow Scitex Ink
CP740A	HP WB300 4-pack 3.8-kg Supreme Black Scitex Ink
CN745A	HP WB300 4-pack 3.8-kg Supreme Light Cyan Scitex Ink
CN746A	HP WB300 4-pack 3.8-kg Supreme Light Magenta Scitex Ink
CH789A	HP WB300 4-pack 3.8-kg Supreme Bright Yellow Scitex Ink

The HP Scitex FB6700 Press has one series of 6 colors, pigmented water-based inks, and two available pre-treatment solutions for use with different media: the PT10 is for cartons and foam-boards, while the PT20 is for plastic materials, such as vinyl and others. There are two versions of yellow ink – the “Bright Yellow” has an extended color gamut and fade resistance. The WB300 Supreme ink is odorless, non flammable and non reactive. The ink has been awarded the “Green Label” by the “Standards Institution of Israel” (SII), and a certificate by the German “Fraunhofer Institut für Verfahrenstechnik und Verpackung” (Institute for Process Engineering and Packaging) for compliance with food regulatory assessment requirements in Europe (EU-Directive 97/48/EC) and in the USA (FDA).

Ink coverage: 72 sqm/liter (at economy split).

Outdoor durability: Up to 12 months.

Shelf life: 12 months from production date.

Pre-treatments

CN748A	HP PT10 10-kg Scitex Solution
CN747A	HP PT20 4-pack 3.8-kg Scitex Solution

SERVICES

Service

HA151AC	HP Scitex FB6700 Full Coverage Service
HK707AC	HP Scitex FB6700 Parts and Remote Service
CC903-63214	HP Scitex FB6700 Basic Uptime Kit
CC903-63237	HP Scitex FB6700 Extended Uptime Kit

HP Scitex inks durability statement



HP Scitex inks

durability statement



HP Scitex inks are designed to give the customer cost effective ink that is the most suitable for their range of applications. These inks consist of high performance pigments and high quality raw materials; they are produced in a state-of-the-art manufacturing facility, and rigorously tested to assure their quality.

HP Scitex UV-curable and solvent based pigmented inks were tested in the laboratory for weather-fastness. This term relates to: color fading, water and moisture influence and printed image degradation. The tests are performed in accordance with ASTM D2565-99 or ISO 11341:1994 standards. Both methods are in fact an artificial, accelerated weathering test that uses a xenon arc as illuminant, filtered with Borosilicate Quartz to match the solar spectral output and intensity. In addition to the illuminant the test consists of temperature, light and dark and water spray (i.e., rain) cycles.

The inks listed below were tested in accordance with ASTM D2565-99, with duration of up to 1000 hours. HP has performed extensive weatherability testing over the years and has found that 500 hours in this specific testing method correlates to 1 year vertical exposure in South Florida. The inks were tested according to HP Scitex weather fastness method on 3M® Scotchcal™ IJ40-10 substrate and passed 1000 hours without significant color fading, which approximately equals 2 years vertical exposure in South Florida.

Solvent based inks:

- HP XL400 Supreme Scitex Ink
- HP XL300 Supreme Scitex Ink
- HP XL200 Supreme Scitex Ink
- HP XL100 Supreme Scitex Ink
- HP G0100 Supreme Scitex Ink
- HP GR100 Supreme Scitex Ink
- HP DR100 Supreme Scitex Ink
- HP TJ100 Supreme Scitex Ink

UV-curable inks:

- HP TJ200 Scitex Ink
- HP TJ210 Scitex Ink
- HP FB221 Scitex Ink
- HP FB225 Scitex Ink
- HP XP222 Scitex Ink

The inks listed below were tested in accordance with ISO 11341:1994, with duration of up to 2000 hours. HP has done extensive weatherability testing over the years and has found that 1000 hours in this specific testing method correlates to 1 year vertical exposure in Central Europe. The inks were tested according to the HP weather fastness method on 3M Scotchcal™ IJ40-10 substrate and passed 2000 hours without significant color fading which equals approximately 2 years vertical exposure in Central Europe.

UV-curable inks:

- HP XP220 Scitex Ink
- HP FB210 Scitex Ink
- HP XP231 Specialty Billboard Scitex Ink

Best outdoor durability depends upon type of media used and will only be achieved with certain substrates. Fading in geographical areas other than the aforementioned will change due to different climatic conditions in these areas. HP cannot guarantee the outdoor durability for printing conditions, type of media, application and geographical location different from the specified conditions.



**Seared ahi tuna
and coconut rice.**
A light & healthy lunch!

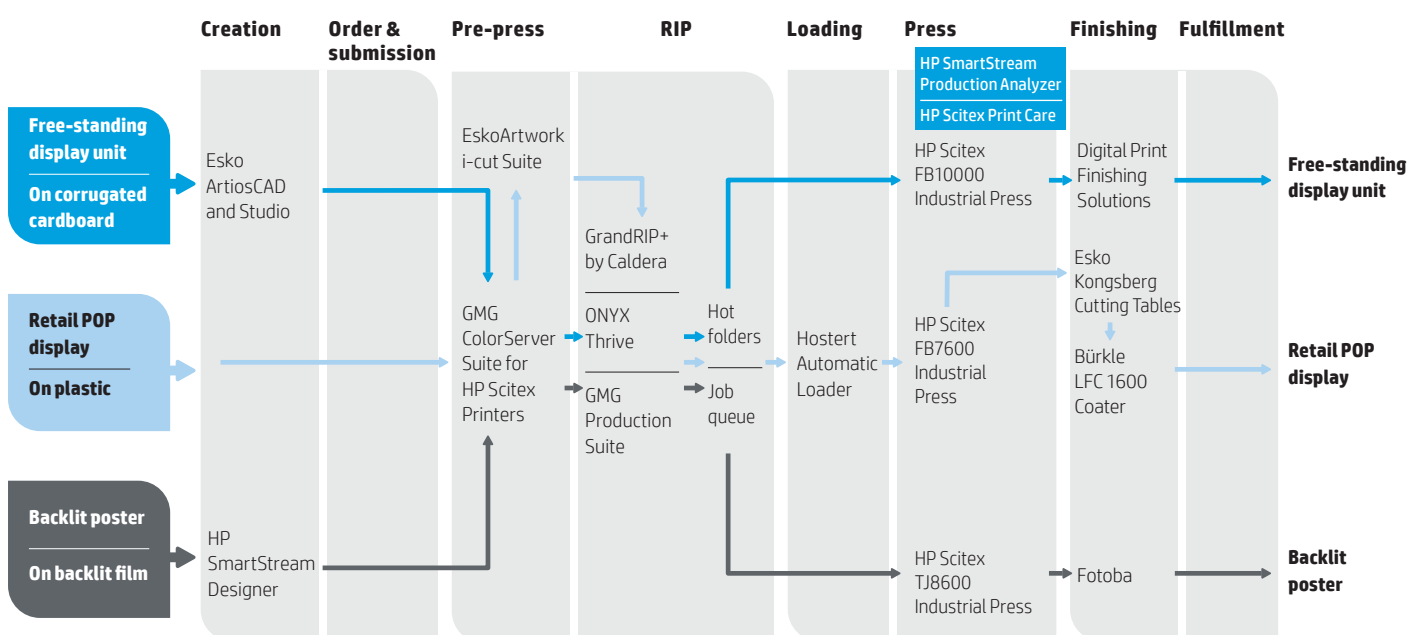
HP Scitex Solutions



HP SmartStream Workflow Portfolio

The HP SmartStream Workflow Portfolio for HP Scitex provides complete workflow solutions – from job creation to fulfillment – to more efficiently drive more pages to press. HP and partners provide a portfolio of production workflow tools and solutions that enhances digital print service providers' flexibility and helps them grow their profits. The workflow portfolio helps print service providers overcome key production challenges in the modern print communications landscape.

- Helps to preserve profitability on short-run, low-revenue jobs by minimizing preparation and finishing time.
- Offers an interactive Workflow Solutions Showroom Tool, featuring HP SmartStream solutions, that helps print service providers identify complete workflow solutions for various applications. Available at hp.com/go/workflowsolutions.
- Includes workflow components from job creation to fulfillment – designed to suit print service providers who want to increase end-to-end productivity by shortening job preparation time, from prepress through RIP, print and job finishing.





Creation and order submission

HP SmartStream Designer

Enables you to offer cost-effective versioned campaigns and variable data printing across a range of wide-format applications. It enables you to add personalized images, text, and colors from within Adobe® InDesign.

Esko ArtiosCAD and Studio

Software applications improve the design of 2D and 3D graphics files to increase prepress productivity. Studio is a plug-in for Adobe® Illustrator® that allows the designer to work easily with 3D files, offering a 3D viewing environment where designers can see their artwork applied instantly to the file. ArtiosCAD is the world's most popular high-end structural design software, allowing a designer to easily build structural designs and 3D displays.

Prepress

GMG ColorServer Suite for Scitex Printers

Includes GMG's ColorServer and SmartProfiler for HP Scitex printers. It optimizes color results for consistent, high-quality color prints.

Esko i-cut Suite

Offers an end-to-end workflow solution that takes pain-points out of the entire process, from design, to print, to cut. The i-cut solution includes several modules:

- i-cut Layout is the Esko software that prepares your incoming files for both digital printing and digital finishing, producing reliable results independent of the RIP or printer. It automatically nests files in a unique way, thereby reducing material usage and preparation time for every job.
- i-cut Preflight means simple PDF preflighting for large-format digital printing. With dedicated production editing tools on board, i-cut Preflight prepares the file for printing and allows you to make last-minute corrections.
- i-cut Automate is a powerful and scalable, yet easy to use, workflow automation server. It integrates all design and production components in one workflow.

RIPS

Caldera GrandRIP+, ONYX Thrive and HP Scitex GMG Production Suite RIPS

Simplify everyday printing tasks, giving you greater control over your workflow.



Loading

HP Scitex Multi-sheet Loader Kit

Allows simultaneous printing of up to 4 pre-cut sheets, with either right or left alignment, reducing turnaround time and waste by eliminating cutting.

Hostert Automatic Loader

An automatic media loader to enhance productivity and enable stack to stack operations

Press

HP SmartStream Production Analyzer

Increases efficiency through deeper understanding of your production gaps and trends. Full, automated monitoring of your print production enables deeper insight into your single- or multiple-unit environment in order to help decrease waste, improve margins, increase workforce efficiency, reduce printer and personnel downtime, and to obtain a better sense of your costs¹. Realtime and historical visibility into your printer activities determine if you use your presses to their fullest potential.

Finishing

Fotoba Digital Print Finishing Solutions

Provide a broad portfolio of vertical cutters, cutters that enable a better workflow and use less production space, helping you keep your delivery promises.

Esko Kongsberg Cutting Tables

Offer state-of-the-art flatbed cutting tables for short-run finishing that come in multiple sizes. They enable fast, accurate, and flexible finishing across a wide range of materials.

Bürklee LFC 1600 Coater

Provides image enhancement and protection, with varnish and other liquids, on a variety of substrates, including corrugated cardboard, composite panels and foils². A roll-to-roll option is available.

¹ This is an SaaS application and requires a purchased license. It does not require installation on site. HP Print Care is a prerequisite to using the HP SmartStream Production Analyzer.

² Not available in all regions, please consult with your HP sales representative.



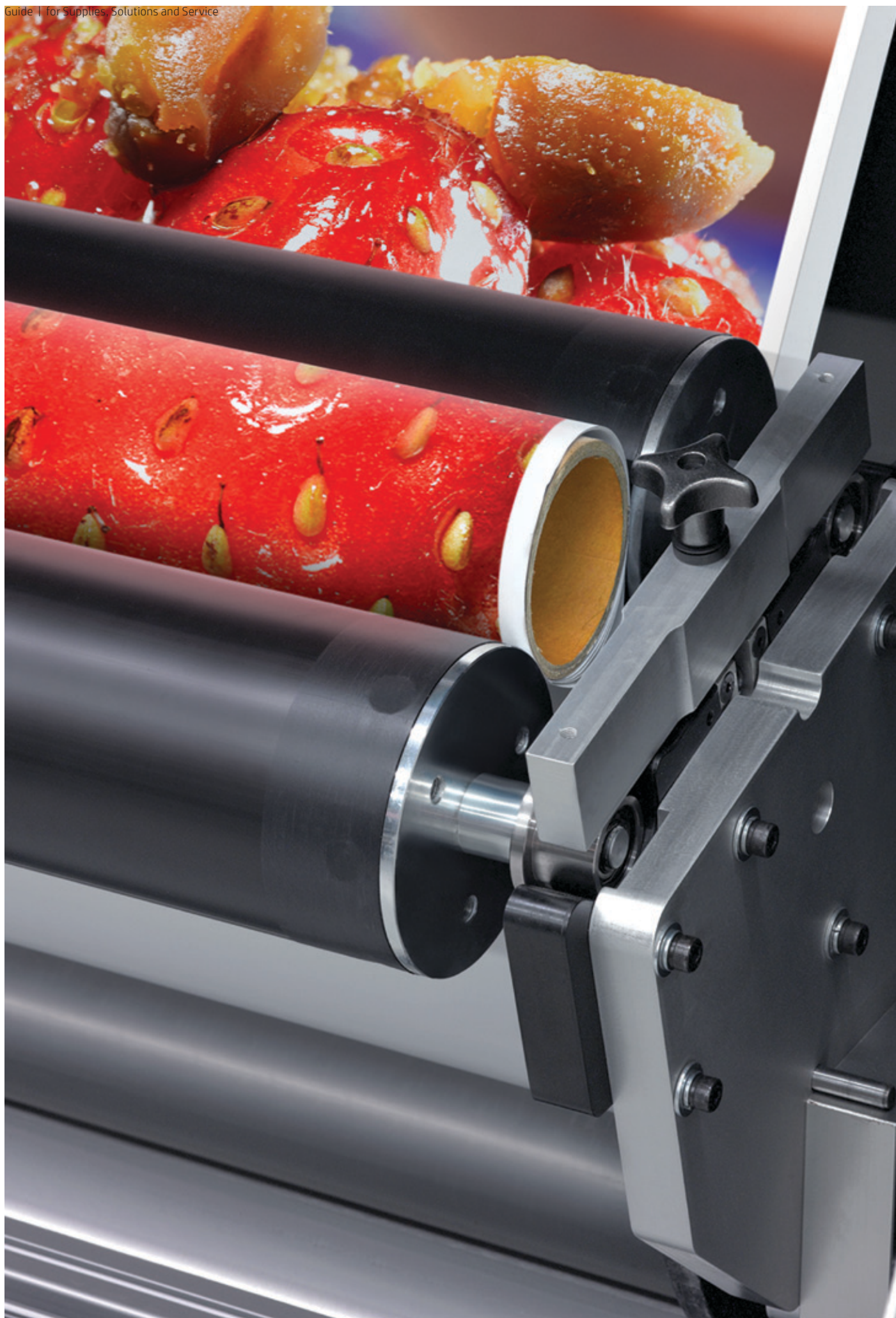
HP Scitex Print Care

Maximize your uptime with a new level of service from HP. HP Scitex Print Care is the industry-leading set of tools and services that provide fast, efficient assistance for effective, timely routine preventative maintenance.

- Remote Assistance using Callme@HP - Our remote assistant is ready and waiting to dialog in real-time using a chat tool to provide remote assistance service and support. Through this service, the remote HP technician uses a camera to look at your printer, sees diagnostic results, and views historical data to help complete maintenance and reach a resolution. This service is designed to be like virtually working side-by-side².
- Diagnostic Tool¹ - The diagnostic tool evaluates various printer components and pinpoints potential problems. The operator or your HP technician can initiate the tool. Or it can be set up to automatically schedule or pre-schedule diagnostic analysis.
- Calibration Tool¹ - Complete accurate printer calibration with this set of procedures specific to the printer platform.
- Backup and Restore¹ - Backup and restore selected files, defined by the administrator on site, to enable a quick recovery in case of a system failure.
- Troubleshooting for diagnostics¹ - Once diagnosis is complete, this enhanced troubleshooting tool provides instructions for resolution.
- Maintenance Scheduler - Receive alerts when it's time to initiate routine maintenance. When timely maintenance is complete, the software indicator schedules the next maintenance reminder. In addition, this tool keeps a maintenance history report and records system events, errors, and messages in a local database.
- Maintenance Wizard¹ - This friendly wizard guides you through each maintenance task by describing the relevant parts and providing instructions on how to perform the task using text, images, illustrations, and video clips.
- Messages Log¹ - View a log of all messages and events that were generated or occurred during printer operation. The messages can be sorted by substrate type, print mode, and subsystem. Predefined filters find trends when the messages occurred. And each message includes one-click access to instructions for resolution.

¹This feature is not available on all printers. Please contact your sales representative for further information.

²The remote HP technician may work directly with your operator, or with your HP Authorized Channel Partner.



HP Scitex Services

At HP, customer care matters. We offer our customers industry-leading service and support, on-site and via advanced remote tools, to ensure increased uptime and productivity. With an HP service contract to match your business priorities and budget, you're assured of enjoying an optimal return on your investment

HP Scitex Services

At HP we offer a full line of support agreements to give you peace of mind as you run your digital printing business.

Full Coverage

An all-inclusive program providing outstanding coverage, plus superb prices on print heads, training, value added services and uptime kits:

- Unlimited remote support.
- Next business day on-site support response.
- On-site labour included.
- Travel expenses included.
- Spare parts included.
- Preventive maintenance.

Shared Maintenance

A balanced program that requires a medium level of self maintenance by operators. HP Customer Engineers are available to help resolve more complex issues:

- Prerequisite: L2 operator training courses.
- 3 annual on-site visits included.
- Unlimited remote support.
- Second business day on-site support response.
- Spare parts included.

Parts & Remote

An entry-level service program for print service providers seeking uninterrupted productivity:

- Unlimited remote support.
- Spare parts included.
- Second business day on-site support response.
- Travel expenses excluded.

Extended Coverage

- Extended Coverage adds an optional print head replacement service to HP Parts & Remote & HP Full Coverage.

Remote Only Support Contract

An entry-level service program for print service providers seeking easy access to HP technical support:

- Unlimited remote support.
- Discount on covered bservice parts included.
- Discount on consumable service parts and On-site Uptime Kits.

HP Scitex Care Center

Country Support Numbers

EMEA

Address:	Hermeslaan ,1 1831 Diegem Belgium		
E-mail:	iid.emea.support@hp.com		
Tel #1:	+32 2 7283444	Tel # 2:	800 870 506 (Italy only Toll free)
Germany	+49 69 380 789 569 (local call)		
UK	+44 2 035 642 044 (local call)		
Italy	+39 800 870 506 (local and toll free)		
Spain	+34 900 814 582 (local and toll free)		
France	+33 805 540 838 (local and toll free)		
others	+32 2 200 8931 (International number)		

Asia Pacific

Address:	19/F City plaza One, 1111 King's Road, Taikoo Shing Hong Kong		
E-mail:	hsap.carecenter@hp.com		
Tel #1:	+852 8103 2666	Tel # 2:	00801 85 5945 (Taiwan only Toll free)
Australia	1300 548 696		
China	400 818 0055		
Japan	0120 855 536 Ext 2		
Taiwan	008 0185 5945 (toll free)		

North America

Address:	2150 New Market Parkway, suite 108 Marietta, GA 30067		
E-mail:	HPLFI.Support-NA@hp.com		
Tel #1:	1 800 204 6344		

Latin America

Address:	Prolongación Reforma #700, Delegación Álvaro Obregón, Mexico City, Distrito Federal 01210, Mexico		
E-mail:	carecenter.ipglf.lar@hp.com		
Tel #1:	+52 1 55 5258 9922	Tel # 2:	01800 47468368 (01800-HPIN-VENT) (Toll Free at Mexico)
Argentina:	5411 470 816 00	Costa Rica:	00 800 011 0524
Chile:	562 436 2610, 800 360 999	El Salvador:	800 6160
Colombia:	571 602 9191, 01 8000 51 4746 8368	Guatemala:	1 800 999 5105
Perú:	511 411 2443, 0 800 10111	Honduras:	800 0 123
Panamá:	001 800 711 2884	República Dominicana:	1 800 711 2884
Venezuela:	58 212 278 8666, 0 800 474 68368	Nicaragua:	1 800 0164

**Please select from menu option 2 & then option 6

Learn more at
hp.com/go/scitex

Sign up for updates
hp.com/go/getupdated

