



options

Personalize GrandRip+ thanks to our options range :

Driver	SUP	<input type="radio"/>
Cost	PROOF	<input type="radio"/>
Cost	VIEW	<input type="radio"/>
Easy	MEDIA	<input type="radio"/>
HPGL	USER	<input type="radio"/>
Visual	CUT	<input type="radio"/>
Visual	CUT	<input type="radio"/>
Grand	CUT	<input type="radio"/>
Nest	OBA	<input type="radio"/>

standard optional not available

[discover all our options](#)

downloads

[GrandRip+ Best Product of the Year](#) [PDF]

links

- [product overview](#)
- [features overview](#)
- [all our printing solutions](#)
- [supported printers](#)

other products

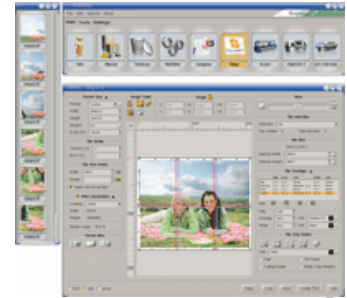


product spec sheet



GrandRip+ is a fast, flexible and powerful production workflow dedicated to **wide and extra-wide format Print and Print-to-Cut applications**.

GrandRip+ is a productive driving force for grand format printers : Nur, Durst, Leggett & Platt/Spuhl, HP/Scitex Vision, Vutek, IP&I, Teckwin, Gandinnovations, Grapo, Lüscher, Matan, Keundo, DGI, Seaband and Zünd.



GrandRip+ interface

Our solution proposes the **latest developments** in terms of colour management, spot colour support, screening techniques and unique finishing oriented features such as tiling, nesting, eyelets positioning, stitching and folding marks.

GrandRip+ was awarded **DPI/SGIA "Best Product of the Year"** during SGIA 2006.

included features



Tiling

Split up documents in various strips for big format jobs.

[more infos](#)



SignMark

Place marks on the tiles, add eyelets, stitch, fold or and place margin mark.

[more infos](#)



Layout & Compose

Merge, nest, stitch, rotate and combine different file formats with manual or numeric positioning.

[more infos](#)



GrandRip+ also includes Spot colours, RIP PS/PDF, ICC support, Task Automation, Super Spooler, Layout with Compose, Tiling, SignMark, Raster Image Retouching, Raster File-to-Print, Fotoba Digitrim and White Ink features.

[discover all our features](#)

[You are interested in GrandRip+ ?](#)
[Print this product card](#)